

Assay Class: Red to Blue  
 Data Path: C:\...00 bioanalyzer\2100 expert\data\2010-10-07\Pink\_07Oct10.xad

Created: 10/7/2010 2:27:35 PM  
 Modified: 10/7/2010 2:55:38 PM

### Flow Cytometry Run Summary

Assay: C:\Program Files\Agilent\2100 bioanalyzer\2100 expert\assays\cells\Red\_to\_Blue Series II.xsy

Assay Type: Cellular Version: 2.1

Assay Class: Red to Blue

Comments: Red to Blue  
 This assay is for applications that apply a red reference dye and analyze blue fluorescent cells within a red population

Acquisition Mode: Default Samples Run: 6

User Name:

Company

Instrument: Instrument Name: DE72905360 Firmware: C.01.069  
 Serial #: DE72905360 Type: G2938C

Chip Comments:

Sample Name	Sample Blue Comment	Blue Staining	Red Staining	Status	Total Events	% of Gated	Observation
Sample 1				✓	70	1.4	
Sample 2				✓	48	6.3	
Sample 3				✓	210	1.9	
Sample 4				✓	663	3.3	
Sample 5				✓	0	0	
Sample 6				✓	561	46.3	

Assay Class: Red to Blue  
Data Path: C:\...00 bioanalyzer\2100 expert\data\2010-10-07\Pink\_07Oct10.xad

Created: 10/7/2010 2:27:35 PM  
Modified: 10/7/2010 2:55:38 PM

## Flow Cytometry Assay Details

### Data Acquisition Parameters

Number of Available Sample Wells (Max.) : 6  
Measurement Mode : Default

### Graph Settings

#### Histogram Settings :

##### Blue :

Minimum : 0.01  
Maximum : 10000  
Scale : log

##### Red :

Minimum : 0.01  
Maximum : 10000  
Scale : log

#### Dot Plot Settings :

##### Blue :

Minimum : 0.01  
Maximum : 10000

##### Red :

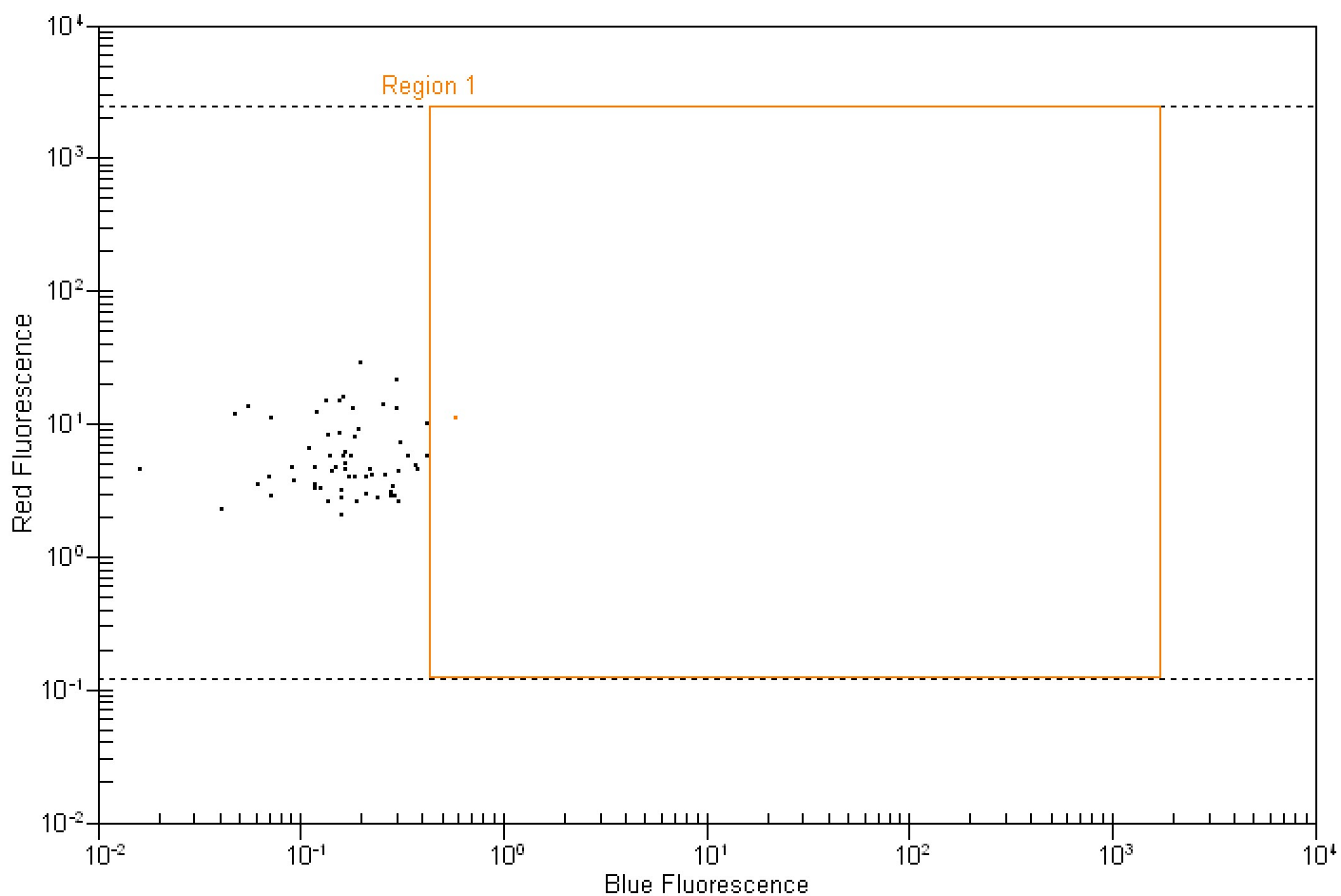
Minimum : 0.01  
Maximum : 10000

Assay Class: Red to Blue  
 Data Path: C:\...00 bioanalyzer\2100 expert\data\2010-10-07\Pink\_07Oct10.xad

Created: 10/7/2010 2:27:35 PM  
 Modified: 10/7/2010 2:55:38 PM

### Dot Plot Summary

Sample 1



#### Dot plot statistics for sample 1 :

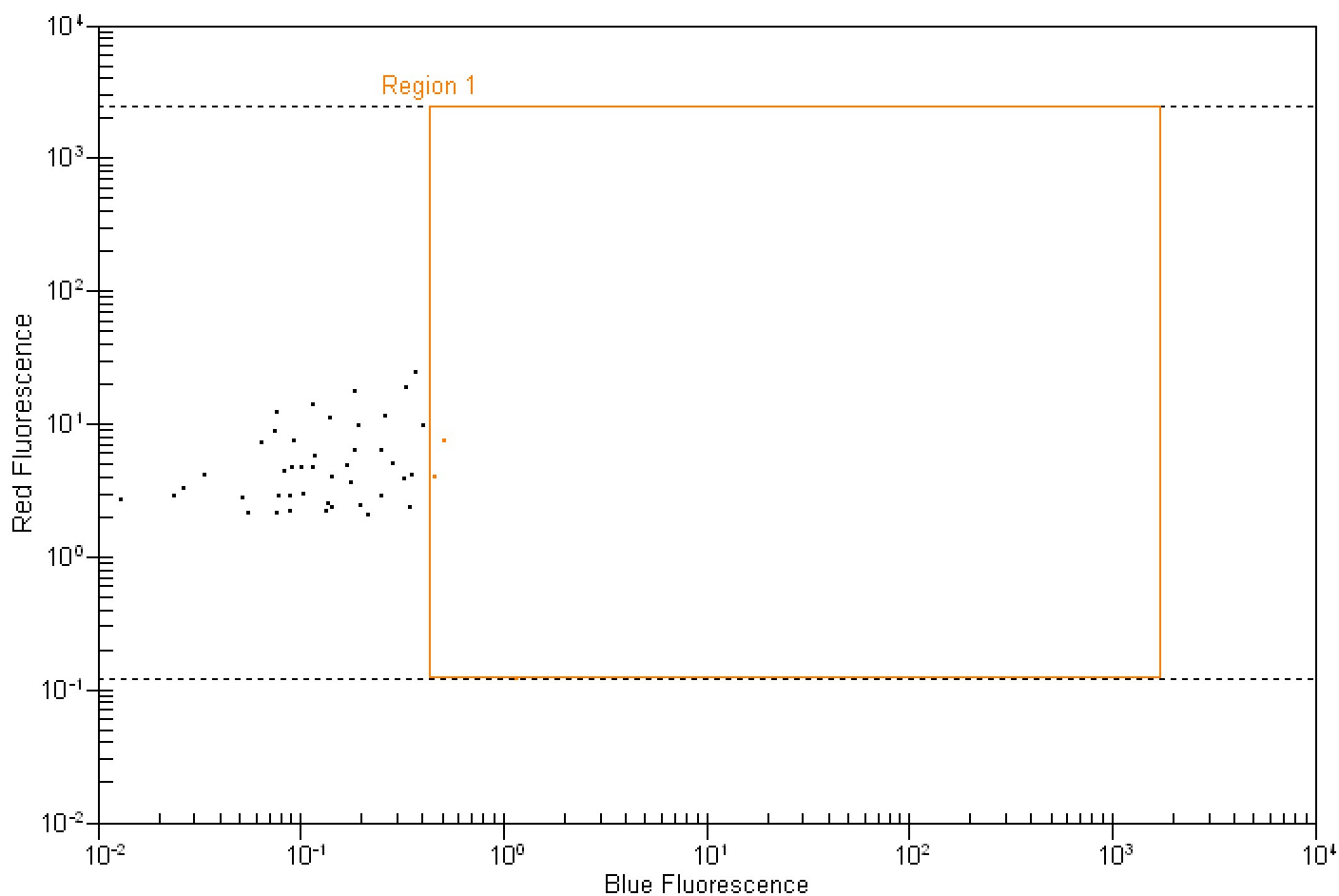
<u>Sample 1</u>											
Region	XMean	YMean	#Events	%Total	% of gated	StdDevX	StdDevY	CV%X	CV%Y	X GMean	Y GMean
All Events	0.18	6.48	70	100.00	N/A	0.12	4.78	63.71	73.77	0.13	5.33
Region 1	0.59	11.13	1	1.40	1.40	0.00	0.00	0.00	0.00	0.59	11.13

Assay Class: Red to Blue  
 Data Path: C:\...00 bioanalyzer\2100 expert\data\2010-10-07\Pink\_07Oct10.xad

Created: 10/7/2010 2:27:35 PM  
 Modified: 10/7/2010 2:55:38 PM

### Dot Plot Summary Continued ...

Sample 2



#### Dot plot statistics for sample 2 :

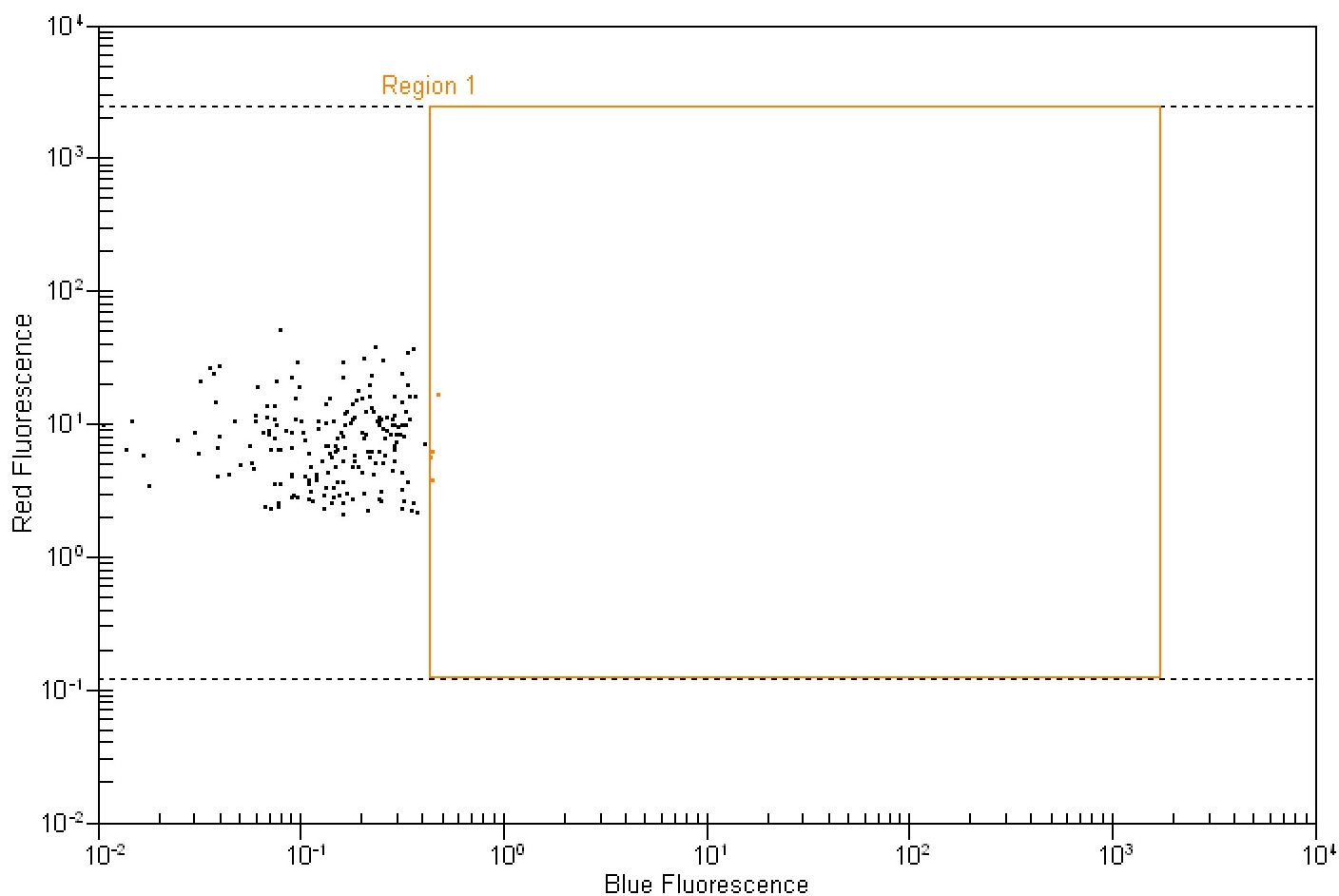
<u>Sample 2</u>											
Region	XMean	YMean	#Events	%Total	% of gated	StdDevX	StdDevY	CV%X	CV%Y	X GMean	Y GMean
All Events	0.19	5.94	48	100.00	N/A	0.19	4.82	99.27	81.15	0.13	4.45
Region 1	0.71	3.85	3	6.30	6.30	0.32	2.99	44.80	77.68	0.65	1.53

Assay Class: Red to Blue  
 Data Path: C:\...00 bioanalyzer\2100 expert\data\2010-10-07\Pink\_07Oct10.xad

Created: 10/7/2010 2:27:35 PM  
 Modified: 10/7/2010 2:55:38 PM

### Dot Plot Summary Continued ...

Sample 3



#### Dot plot statistics for sample 3 :

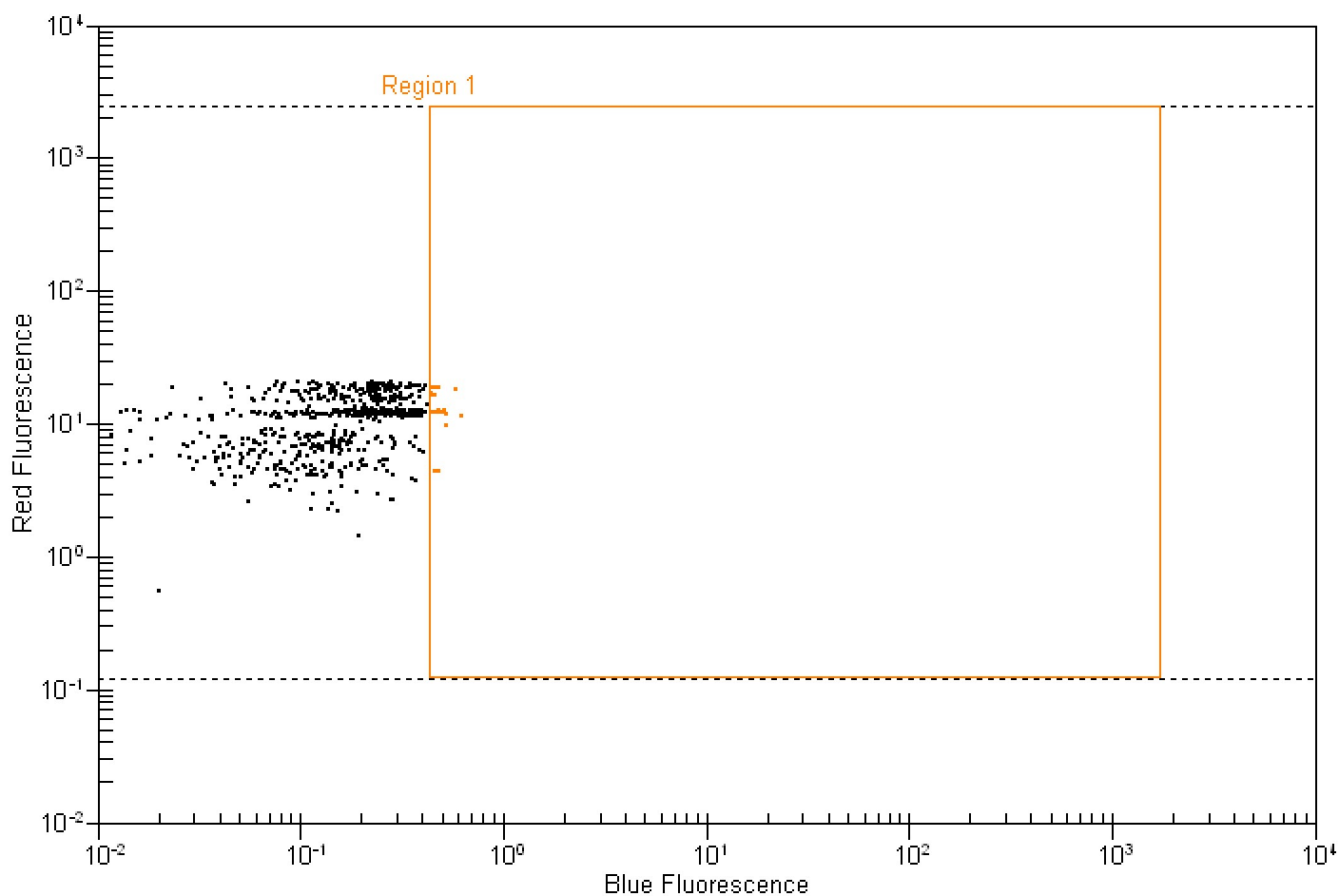
<u>Sample 3</u>											
Region	XMean	YMean	#Events	%Total	% of gated	StdDevX	StdDevY	CV%X	CV%Y	X GMean	Y GMean
All Events	0.17	9.38	210	100.00	N/A	0.11	7.55	65.08	80.54	0.12	7.32
Region 1	0.46	7.91	4	1.90	1.90	0.01	5.00	3.25	63.17	0.46	6.69

Assay Class: Red to Blue  
 Data Path: C:\...00 bioanalyzer\2100 expert\data\2010-10-07\Pink\_07Oct10.xad

Created: 10/7/2010 2:27:35 PM  
 Modified: 10/7/2010 2:55:38 PM

### Dot Plot Summary Continued ...

Sample 4



#### Dot plot statistics for sample 4 :

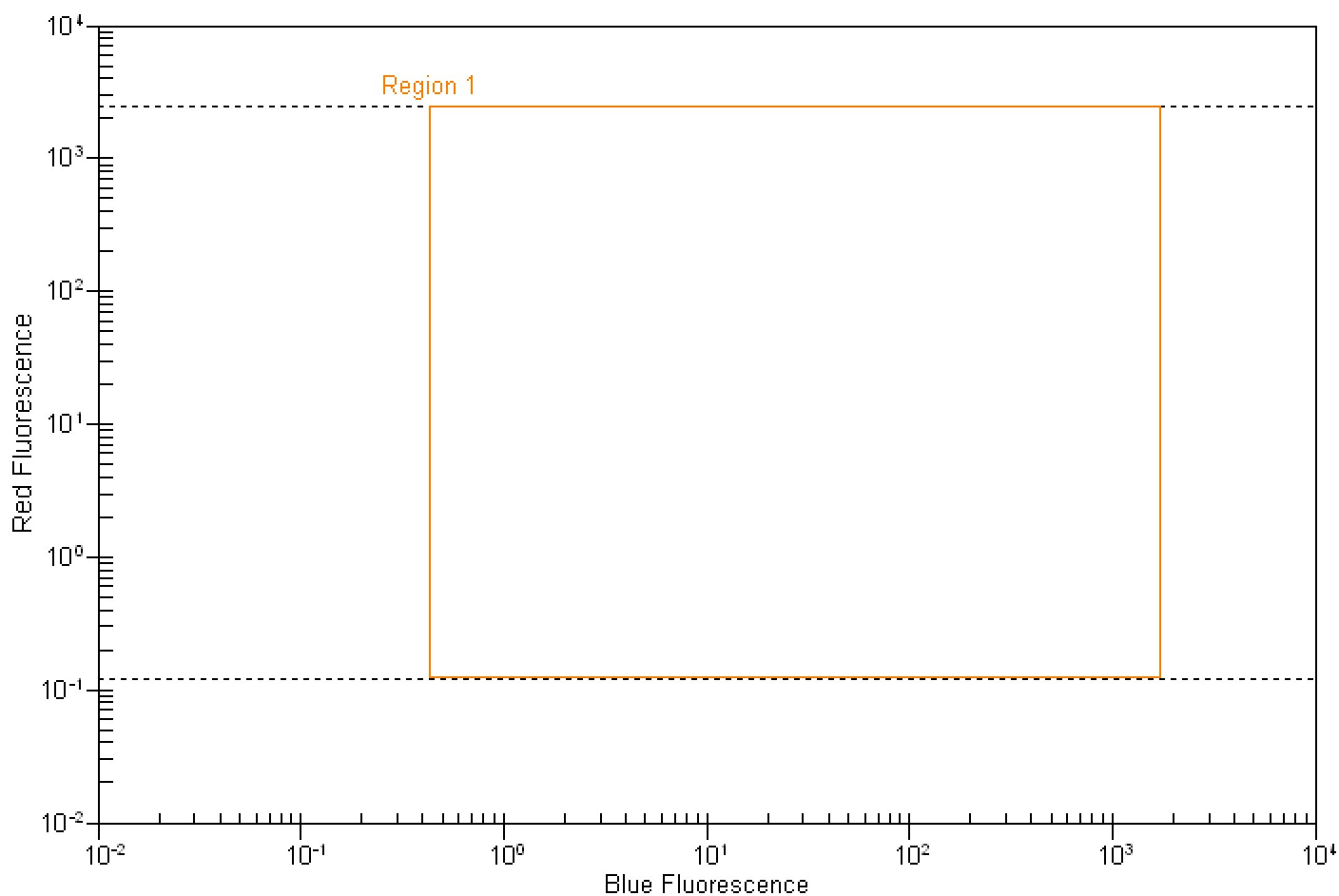
<u>Sample 4</u>											
Region	XMean	YMean	#Events	%Total	% of gated	StdDevX	StdDevY	CV%X	CV%Y	X GMean	Y GMean
All Events	0.18	11.19	663	100.00	N/A	0.12	4.88	65.55	43.57	0.13	9.93
Region 1	0.48	13.61	22	3.30	3.30	0.04	4.10	9.24	30.13	0.48	12.78

Assay Class: Red to Blue  
Data Path: C:\...00 bioanalyzer\2100 expert\data\2010-10-07\Pink\_07Oct10.xad

Created: 10/7/2010 2:27:35 PM  
Modified: 10/7/2010 2:55:38 PM

**Dot Plot Summary Continued ...**

Sample 5

**Dot plot statistics for sample 5 :****Sample 5**

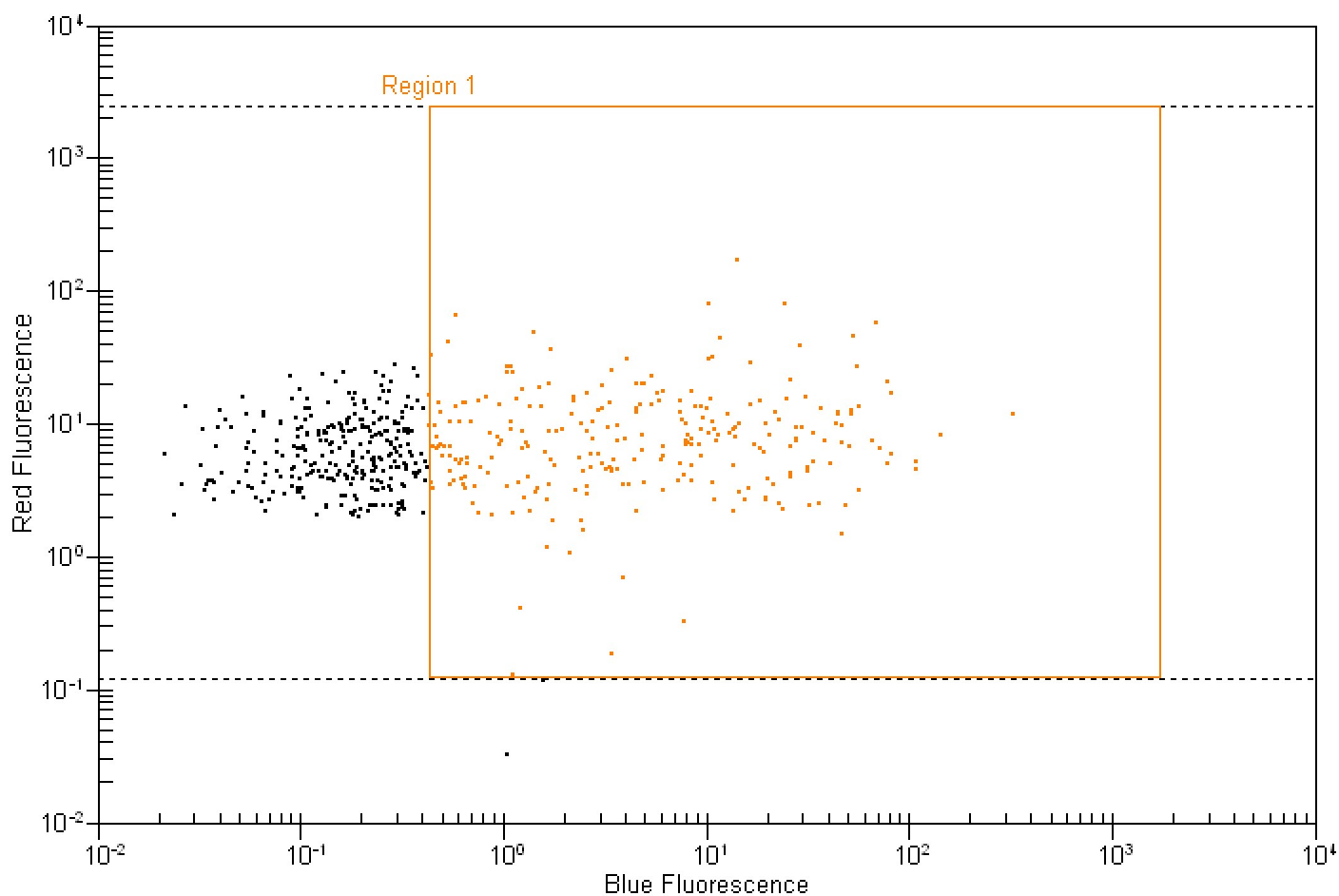
Region	XMean	YMean	#Events	%Total	% of gated	StdDevX	StdDevY	CV%X	CV%Y	X GMean	Y GMean
All Events	0.00	0.00	0	0.00	N/A	0.00	0.00	0.00	0.00	0.00	0.00
Region 1	0.00	0.00	0	0.00	N/A	0.00	0.00	0.00	0.00	0.00	0.00

Assay Class: Red to Blue  
 Data Path: C:\...00 bioanalyzer\2100 expert\data\2010-10-07\Pink\_07Oct10.xad

Created: 10/7/2010 2:27:35 PM  
 Modified: 10/7/2010 2:55:38 PM

### Dot Plot Summary Continued ...

Sample 6



#### Dot plot statistics for sample 6 :

<u>Sample 6</u>											
Region	XMean	YMean	#Events	%Total	% of gated	StdDevX	StdDevY	CV%X	CV%Y	X GMean	Y GMean
All Events	6.69	9.02	561	100.00	N/A	20.53	10.92	306.63	121.10	0.71	6.47
Region 1	14.27	11.18	259	46.20	46.30	28.36	14.90	198.81	133.36	4.68	7.35

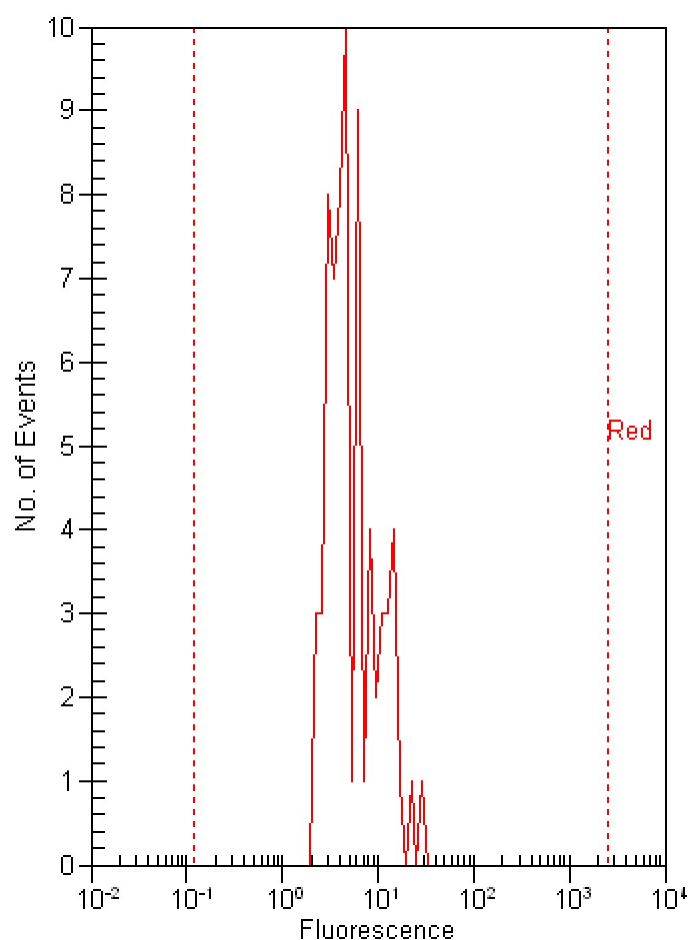
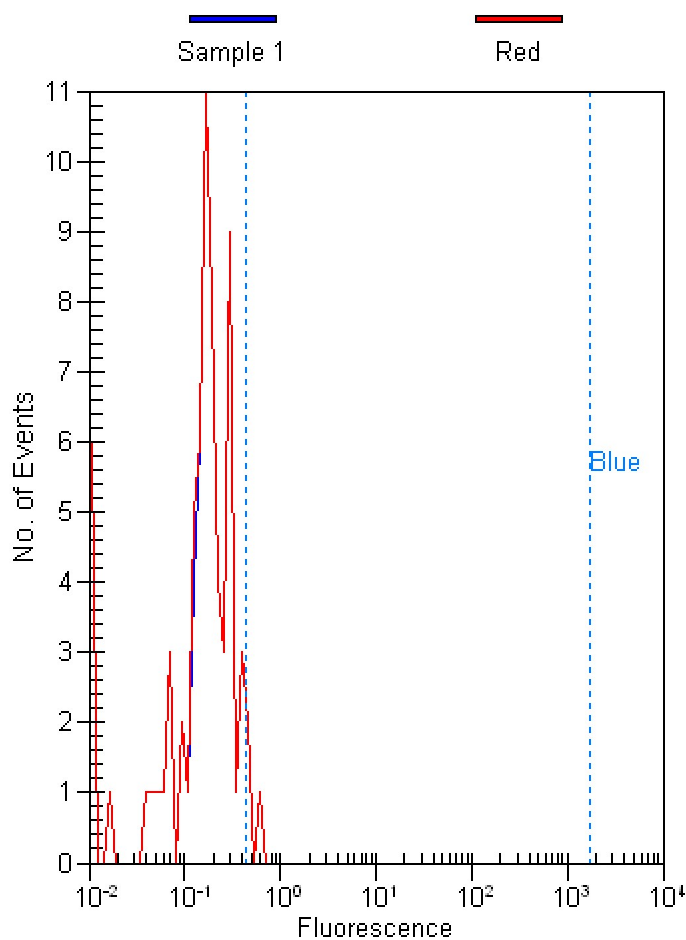


Assay Class: Red to Blue  
 Data Path: C:\...00 bioanalyzer\2100 expert\data\2010-10-07\Pink\_07Oct10.xad

Created: 10/7/2010 2:27:35 PM  
 Modified: 10/7/2010 2:55:38 PM

### Histogram Summary

Sample 1



#### Histogram statistics for sample 1 :

#### Sample 1 -

Marker	Min	Max	#Events	%Total	% of gated	Mean	StdDev	CV%	GMean
All Events	0.01	0.59	70	100.00	N/A	0.18	0.12	63.71	0.13
Gated by Red	0.01	0.59	70	100.00	N/A	0.18	0.12	63.70	0.13
Blue on all events	0.43	1754.75	1	1.40	N/A	0.59	0.00	0.00	0.59
Blue on subset	0.43	1754.75	1	1.40	1.40	0.59	0.00	0.00	0.59

#### Histogram statistics for sample 1 :

#### Sample 1 -

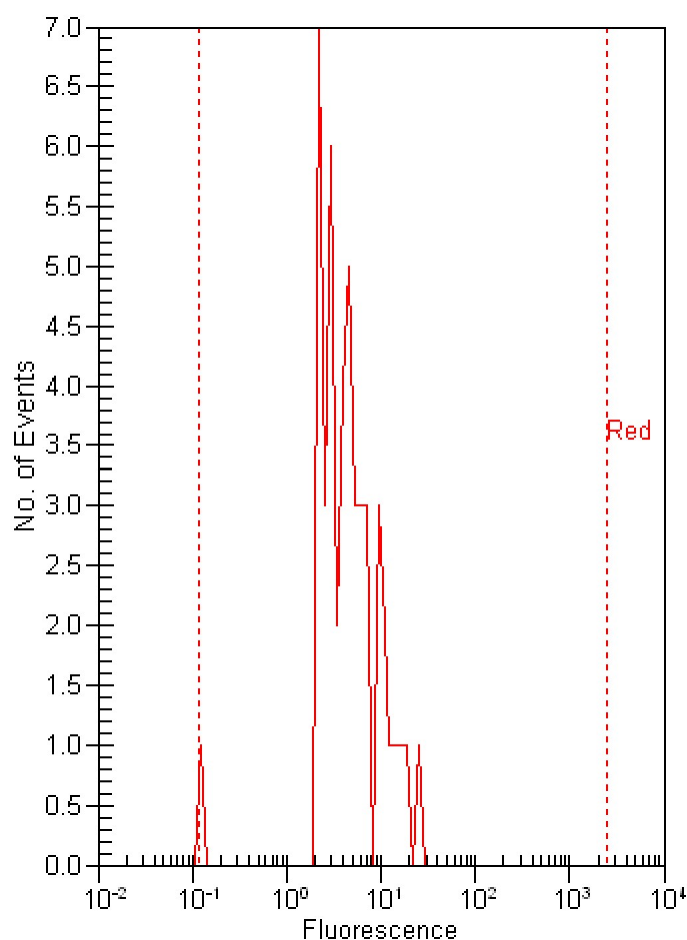
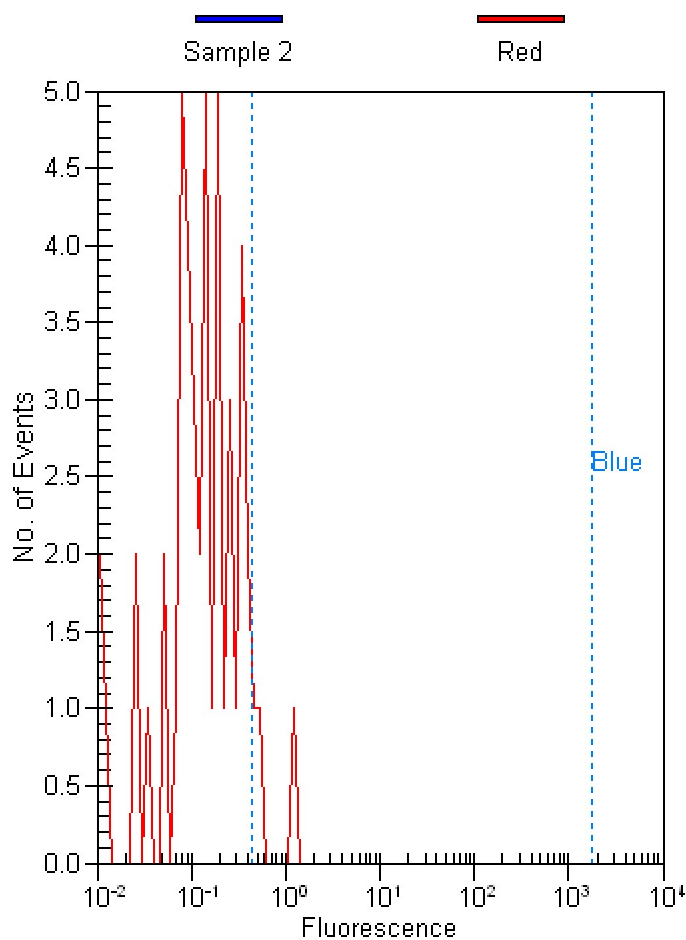
Marker	Min	Max	#Events	%Total	% of gated	Mean	StdDev	CV%	GMean
All Events	2.07	28.29	70	100.00	N/A	6.48	4.78	73.77	5.33
Red on all events	0.12	2495.34	70	100.00	N/A	6.57	4.80	73.08	5.39

Assay Class: Red to Blue  
 Data Path: C:\...00 bioanalyzer\2100 expert\data\2010-10-07\Pink\_07Oct10.xad

Created: 10/7/2010 2:27:35 PM  
 Modified: 10/7/2010 2:55:38 PM

### Histogram Summary Continued ...

Sample 2



#### Histogram statistics for sample 2 :

#### Sample 2 -

Marker	Min	Max	#Events	%Total	% of gated	Mean	StdDev	CV%	GMean
All Events	0.01	1.16	48	100.00	N/A	0.19	0.19	99.27	0.13
Gated by Red	0.01	1.16	48	100.00	N/A	0.19	0.19	100.66	0.12
Blue on all events	0.43	1754.75	3	6.30	N/A	0.71	0.32	44.80	0.65
Blue on subset	0.43	1754.75	3	6.30	6.30	0.71	0.32	44.80	0.65

#### Histogram statistics for sample 2 :

#### Sample 2 -

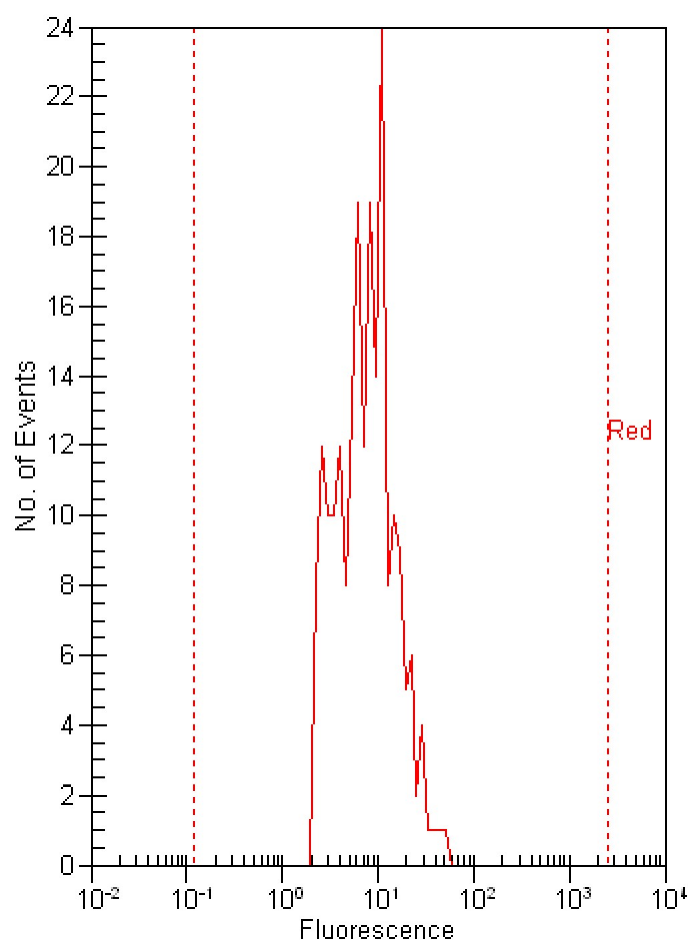
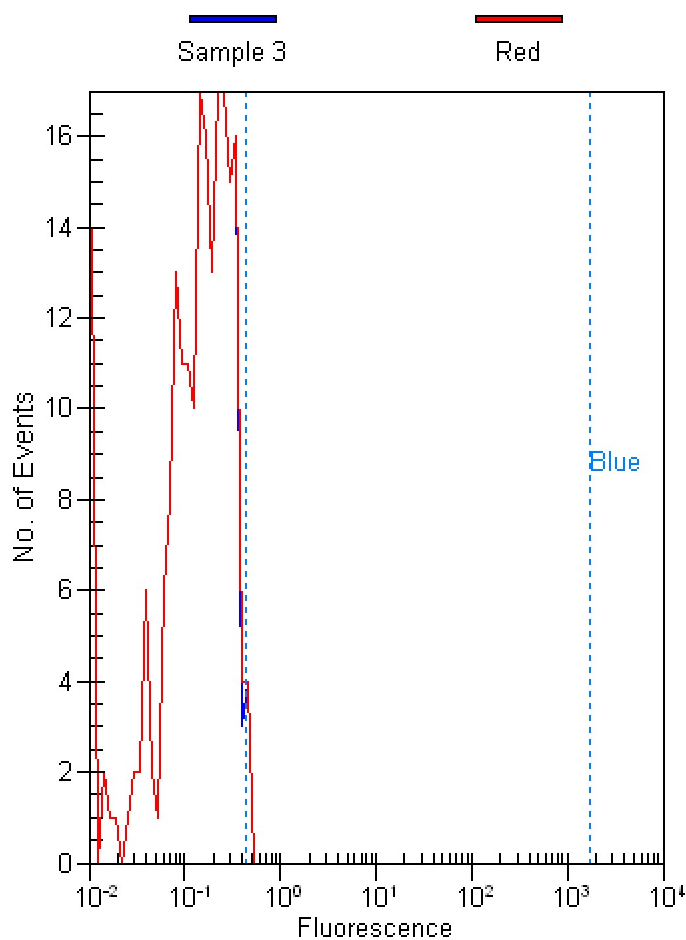
Marker	Min	Max	#Events	%Total	% of gated	Mean	StdDev	CV%	GMean
All Events	0.12	24.23	48	100.00	N/A	5.94	4.82	81.15	4.45
Red on all events	0.12	2495.34	48	100.00	N/A	5.90	4.78	80.96	4.44

Assay Class: Red to Blue  
 Data Path: C:\...00 bioanalyzer\2100 expert\data\2010-10-07\Pink\_07Oct10.xad

Created: 10/7/2010 2:27:35 PM  
 Modified: 10/7/2010 2:55:38 PM

### Histogram Summary Continued ...

Sample 3



#### Histogram statistics for sample 3 :

#### Sample 3 -

Marker	Min	Max	#Events	%Total	% of gated	Mean	StdDev	CV%	GMean
All Events	0.01	0.48	210	100.00	N/A	0.17	0.11	65.08	0.12
Gated by Red	0.01	0.48	210	100.00	N/A	0.17	0.11	65.08	0.12
Blue on all events	0.43	1754.75	4	1.90	N/A	0.46	0.01	3.25	0.46
Blue on subset	0.43	1754.75	4	1.90	1.90	0.46	0.01	3.25	0.46

#### Histogram statistics for sample 3 :

#### Sample 3 -

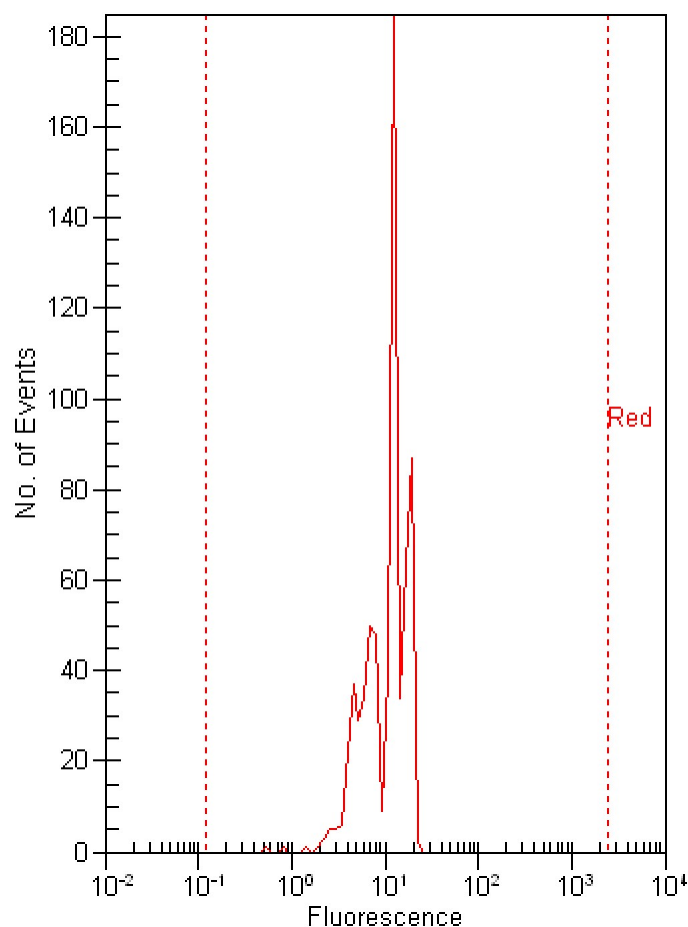
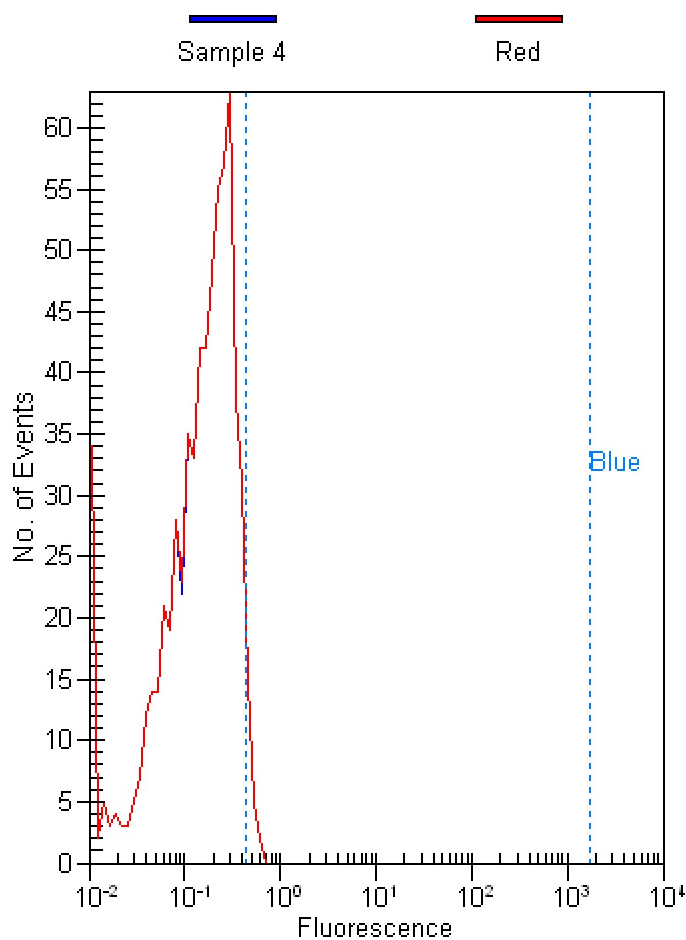
Marker	Min	Max	#Events	%Total	% of gated	Mean	StdDev	CV%	GMean
All Events	2.08	50.94	210	100.00	N/A	9.38	7.55	80.54	7.32
Red on all events	0.12	2495.34	210	100.00	N/A	9.50	7.75	81.55	7.37

Assay Class: Red to Blue  
 Data Path: C:\...00 bioanalyzer\2100 expert\data\2010-10-07\Pink\_07Oct10.xad

Created: 10/7/2010 2:27:35 PM  
 Modified: 10/7/2010 2:55:38 PM

### Histogram Summary Continued ...

Sample 4



#### Histogram statistics for sample 4 :

#### Sample 4 -

Marker	Min	Max	#Events	%Total	% of gated	Mean	StdDev	CV%	GMean
All Events	0.01	0.62	663	100.00	N/A	0.18	0.12	65.55	0.13
Gated by Red	0.01	0.62	663	100.00	N/A	0.18	0.12	65.58	0.13
Blue on all events	0.43	1754.75	22	3.30	N/A	0.48	0.04	9.24	0.48
Blue on subset	0.43	1754.75	22	3.30	3.30	0.48	0.04	9.24	0.48

#### Histogram statistics for sample 4 :

#### Sample 4 -

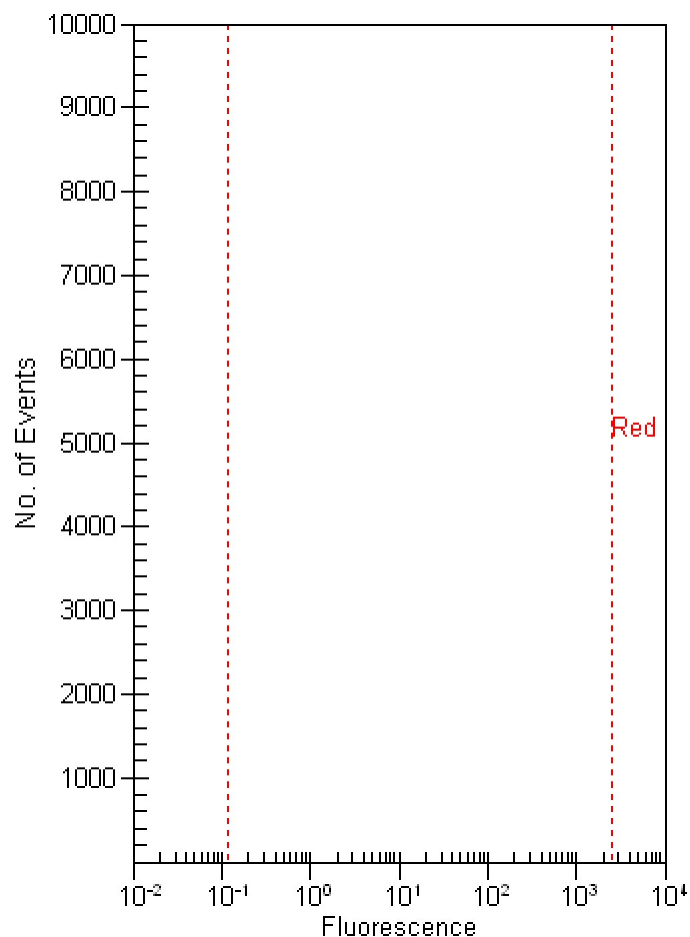
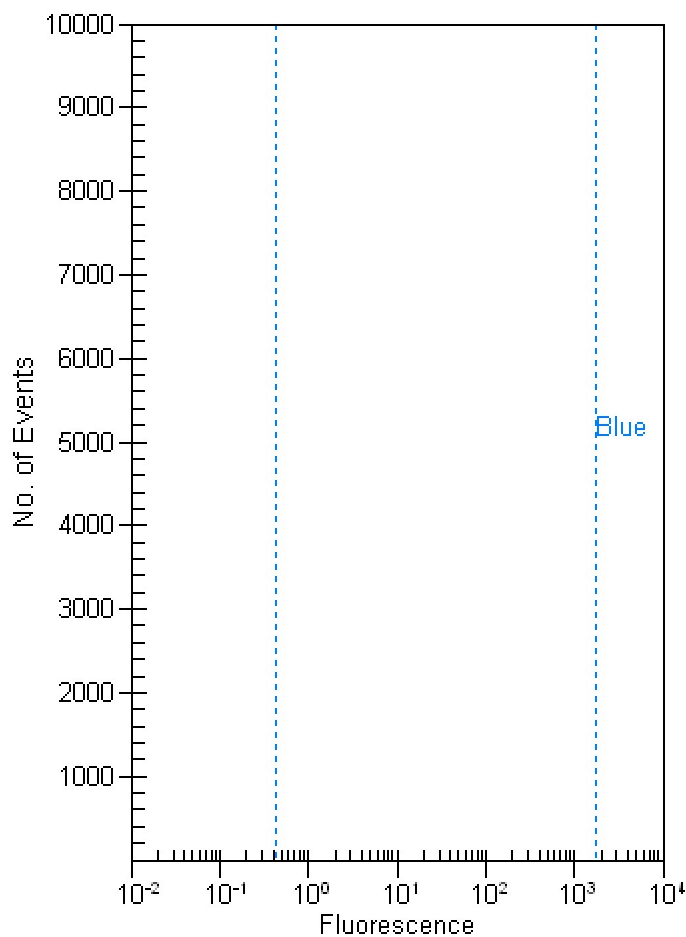
Marker	Min	Max	#Events	%Total	% of gated	Mean	StdDev	CV%	GMean
All Events	0.55	20.97	663	100.00	N/A	11.19	4.88	43.57	9.93
Red on all events	0.12	2495.34	663	100.00	N/A	11.19	4.87	43.54	9.93

Assay Class: Red to Blue  
 Data Path: C:\...00 bioanalyzer\2100 expert\data\2010-10-07\Pink\_07Oct10.xad

Created: 10/7/2010 2:27:35 PM  
 Modified: 10/7/2010 2:55:38 PM

### Histogram Summary Continued ...

Sample 5



#### Histogram statistics for sample 5 :

#### Sample 5 -

Marker	Min	Max	#Events	%Total	% of gated	Mean	StdDev	CV%	GMean
All Events	0.00	0.00	0	0.00	0.00	0.00	0.00	0.00	0.00
Gated by Red	0.00	0.00	0	0.00	0.00	0.00	0.00	0.00	0.00
Blue on all events	0.43	1754.75	0	0.00	0.00	0.00	0.00	0.00	0.00
Blue on subset	0.43	1754.75	0	0.00	0.00	0.00	0.00	0.00	0.00

#### Histogram statistics for sample 5 :

#### Sample 5 -

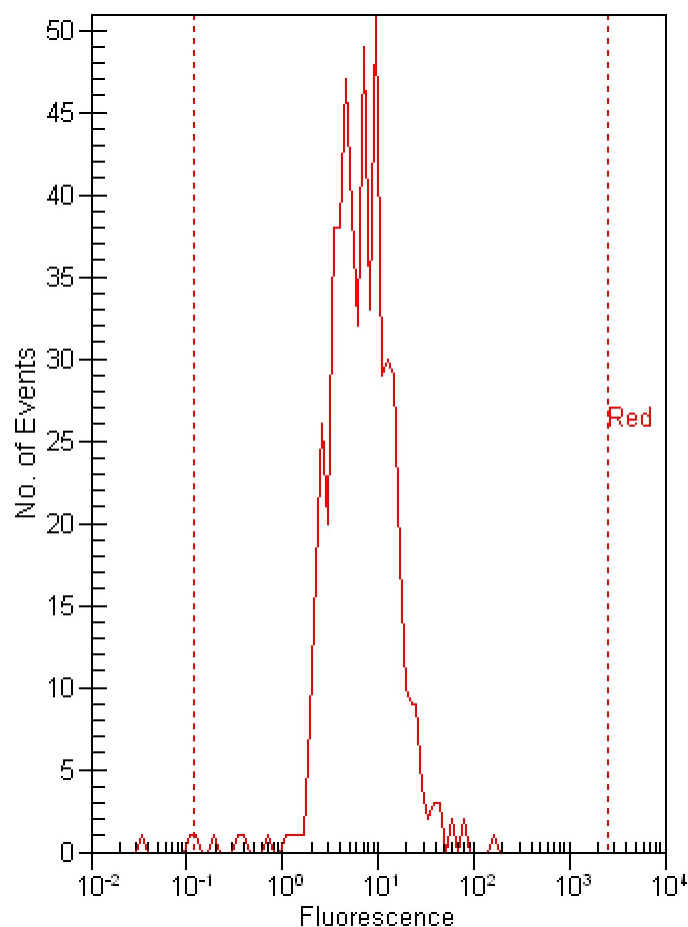
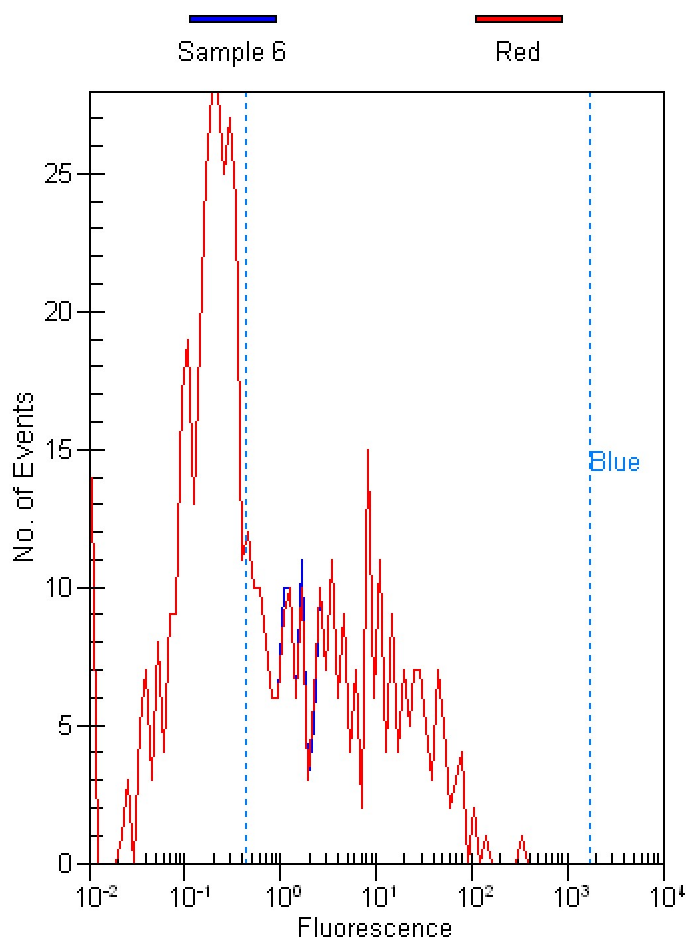
Marker	Min	Max	#Events	%Total	% of gated	Mean	StdDev	CV%	GMean
All Events	0.00	0.00	0	0.00	0.00	0.00	0.00	0.00	0.00
Red on all events	0.12	2495.34	0	0.00	0.00	0.00	0.00	0.00	0.00

Assay Class: Red to Blue  
 Data Path: C:\...00 bioanalyzer\2100 expert\data\2010-10-07\Pink\_07Oct10.xad

Created: 10/7/2010 2:27:35 PM  
 Modified: 10/7/2010 2:55:38 PM

### Histogram Summary Continued ...

Sample 6



#### Histogram statistics for sample 6 :

#### Sample 6 -

Marker	Min	Max	#Events	%Total	% of gated	Mean	StdDev	CV%	GMean
All Events	0.01	329.14	561	100.00	N/A	6.69	20.53	306.63	0.71
Gated by Red	0.01	329.14	559	99.60	N/A	6.71	20.54	306.36	0.71
Blue on all events	0.43	1754.75	261	46.50	N/A	14.17	28.28	199.60	4.64
Blue on subset	0.43	1754.75	259	46.20	46.30	14.27	28.36	198.81	4.68

#### Histogram statistics for sample 6 :

#### Sample 6 -

Marker	Min	Max	#Events	%Total	% of gated	Mean	StdDev	CV%	GMean
All Events	0.03	172.00	561	100.00	N/A	9.02	10.92	121.10	6.47
Red on all events	0.12	2495.34	559	99.60	N/A	9.07	10.92	120.51	6.59

Assay Class: Red to Blue  
 Data Path: C:\...00 bioanalyzer\2100 expert\data\2010-10-07\Pink\_07Oct10.xad

Created: 10/7/2010 2:27:35 PM  
 Modified: 10/7/2010 2:55:38 PM

**Run Logbook**

Description	Number	Source	Category	Sub Category	Time Stamp	Time Zone	User	Host
Run ended on port 1 (Number of wells acquired: 6)		Instrument	Run		10/7/2010 2:54:00 PM	(GMT --04:00) Eastern Standard Time	Administrator	DATASYSTEM01
Run started on port 1 (File: C:\Program Files\Agilent\2100 bioanalyzer\2100 expert\Data\2010-10-07\2100 expert_Red to Blue_DE72905360_2010-10-07_14-27-35.xad)		Instrument	Run		10/7/2010 2:27:40 PM	(GMT --04:00) Eastern Standard Time	Administrator	DATASYSTEM01
Product Number : G2938C		Instrument	Run		10/7/2010 2:27:40 PM	(GMT --04:00) Eastern Standard Time	Administrator	DATASYSTEM01
Name :		Instrument	Run		10/7/2010 2:27:40 PM	(GMT --04:00) Eastern Standard Time	Administrator	DATASYSTEM01
Vendor : Agilent Technologies		Instrument	Run		10/7/2010 2:27:40 PM	(GMT --04:00) Eastern Standard Time	Administrator	DATASYSTEM01
Serial# : DE72905360		Instrument	Run		10/7/2010 2:27:40 PM	(GMT --04:00) Eastern Standard Time	Administrator	DATASYSTEM01
Firmware : C.01.069		Instrument	Run		10/7/2010 2:27:40 PM	(GMT --04:00) Eastern Standard Time	Administrator	DATASYSTEM01
Cartridge : Pressure		Instrument	Run		10/7/2010 2:27:40 PM	(GMT --04:00) Eastern Standard Time	Administrator	DATASYSTEM01